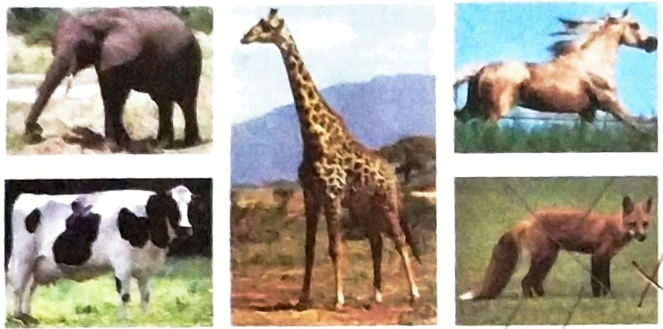


# Animal Kingdom

There are different kinds of animals in this world. They have been categorised into six groups on the basis of their characteristics.

In each of the groups shown below there is one animal that does not belong to that group. Cross out that animal.

## 1. Herbivores



## 2. Carnivores



## 3. Vertebrates



## 4. Invertebrates



## 5. Insects



## 6. Reptiles



### Do You Know

Whale is not a fish. It is a mammal which lives in water and looks like a fish.



## The Wild World

Many animals have become 'extinct'. It means that they are no more in this world. Many animals are going to become extinct soon. Such animals have been protected in various national parks and sanctuaries in India as well as in most countries around the world.

Given below are the names of some national parks and sanctuaries of India with the picture of an animal that is protected there. Can you name the state where these national park and sanctuaries are located?



Kanha National Park

Madhya Pradesh



Gir National Park

Gujrat



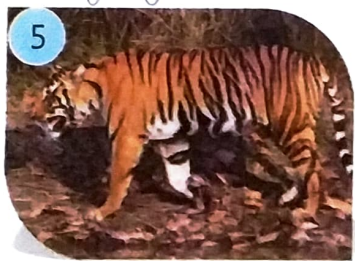
Sundarbans Sanctuary

West Bengal



Kaziranga National Park

Assam



Sariska Tiger Reserve

Rajasthan



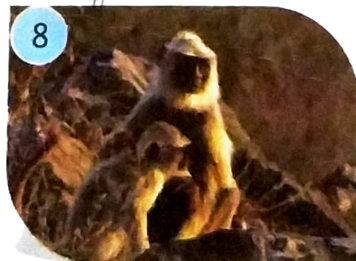
Periyar Sanctuary

Kerala



Corbett National Park

Uttarakhand



Bandipur National Park

Karnataka

### Clue Box



West Bengal, Kerala, Uttarakhand,  
Assam, Gujarat, Karnataka,  
Madhya Pradesh, Rajasthan



### Do You Know

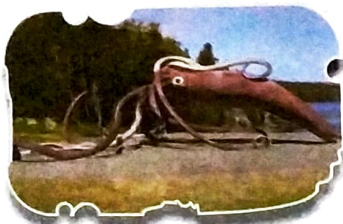
Dudhwa National Park in Uttar Pradesh is a famous reserve for Tiger, Panther, Sambar, Cheetah and Barking Deer.



## Lesser Known Animals

Some animals are very common. They can be seen almost everywhere. However, there are some animals that we rarely see. Shown below are a few such animals. Name the animals after reading about them and looking at their pictures. You can take help of the clues.

1. This is the largest lizard in the world. It is found in the Komodo Island of Indonesia. It is the Komodo Dragon



2. This animal lives in seawater. It has the biggest eyes among all the sea animals. Its eyes are as big as a basketball. It is the Giant Squid

3. This is a large carnivorous sea animal. It lives in the icy cold waters of the Arctic Ocean. It has two long tusks like that of an elephant. It is the Walrus



4. This animal lives in the cold regions of Tibet in the north of Himalayas. It eats ice and snow to quench its thirst even if there is plenty of water available. It is the Yak

5. This fish uses its fins to glide in air just above the surface of water. It can glide for over 1 km distance. It is the Flying Fish



6. This is a very clever sea animal. It changes its body colour according to the colour of the seabed where it lives. This saves it from its enemies. It is the Cuttle fish



### Do You Know

The campaign launched jointly by India and Nepal to conserve vultures is named as SAVE (Saving Asia's Vultures from Extinction).

### Clue Box



Yak, Walrus, Komodo dragon, Giant Squid, Koala, Cuttlefish, Flying fish

# The Green World

The places where different plants are grown are known by different names. Some of them are given below. Match these descriptions with their correct names.



## Column A

- 1 A place where plants are grown for being sold.
- 2 A large piece of land where the crop of tea, coffee or rubber is grown.
- 3 A place where crops are grown.
- 4 A glass building in which plants are grown to save them from bad weather.
- 5 A place where grapevines are grown.
- 6 A place where rice is grown.
- 7 A place where fruit trees are grown.
- 8 A place adjacent to house where vegetables are grown.



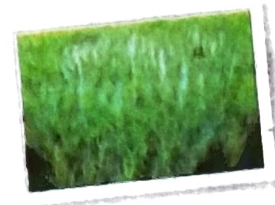
## Column B



(a) Greenhouse (4)



(b) Nursery (1)



(c) Vineyard (5)



(d) Plantation (2)



(e) Orchard (7)

(f) Kitchen garden (8)

(g) Paddy field (6)

(h) Farm (3)



### Do You Know

A group of trees grown close together is known as a grove. Research indicates that plants grow healthier when they are stroked.

### Test Your I.Q.



Which is the fastest growing plant?

## I. Name the following.

1.



cotton plant

2.



Giant Squid

3.



dragon fly

## II. Fill in the blanks.

1. Wolf is a Carnivorous animal.
2. Ants have two stomach.
3. Gir National Park is located in Gujarat.
4. Komodo dragon is the largest lizard.
5. A place where fruit trees are grown is called Orchard.

## III. Match the following.

### Column A

1. Poppy plant
2. Tortoise
3. Ant
4. Lynx
5. Rubber plant

### Column B

- (a) Reptile
- (b) Cat family
- (c) Opium
- (d) Latex
- (e) Insect

## IV. Mark 'T' for true and 'F' for false.

1. A parrot belongs to the reptile group.
2. Kaziranga National Park is in the state of Assam.
3. Komodo dragon is the largest lizard in the world.
4. A place where fruit trees are grown is called a nursery.

|   |
|---|
| F |
| T |
| T |
| F |